



BLTC BIOMASA Nazarje

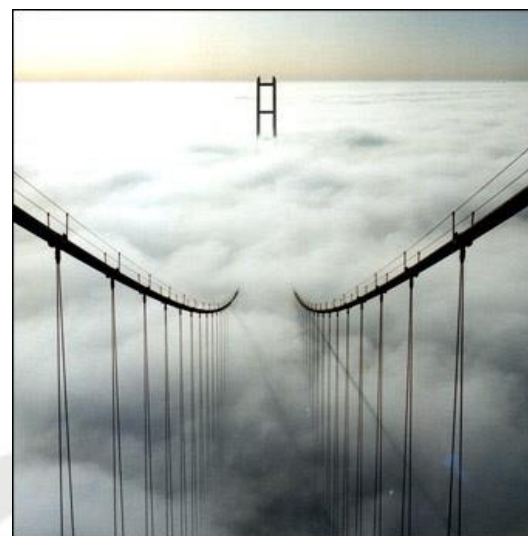
Energy Agency KSENA

Freising, 06.02.2015

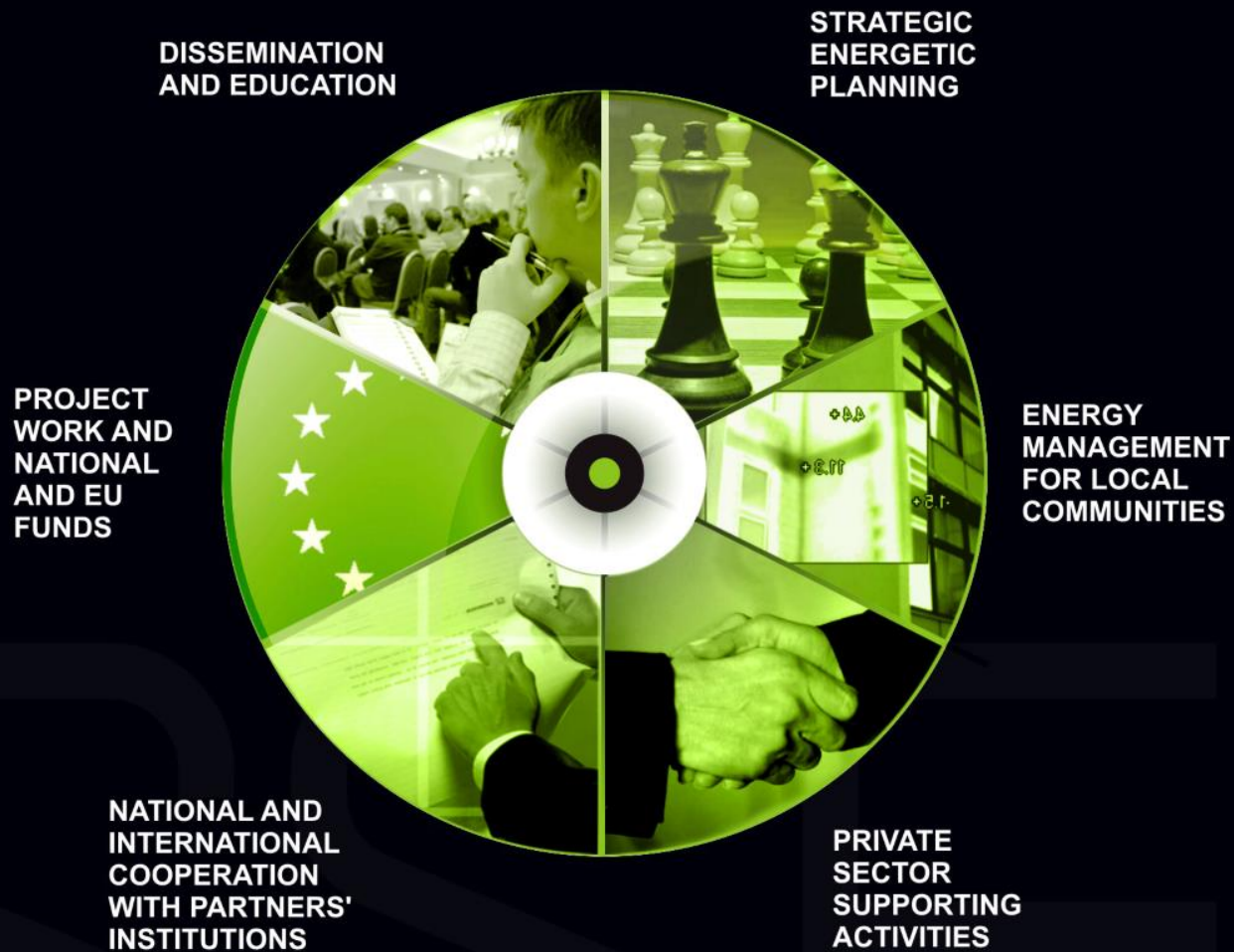
Zavod Energetska agencija za Savinjsko, Šaleško in Koroško
Energy Agency of Savinjska, Šaleška and Koroška Region
Koroška 37a / SI-3320 Uelenje / Slovenija

What is KSSENA?

- Expert organisation specialized in the field of energetics, with the emphasis on RES and RUE, and project management
- Professional bridge between potential users (emphasis on the public sector) and suppliers of specialized energetic services and products
- Established in 2006 within the framework of Intelligent Energy Europe (IEE)
- Founders: Municipality of Velenje (MOV), Municipality of Celje (MOC), Municipality of Slovenj Gradec (MOSG) and Public utilities company (KPV)
- Number of employees: 10

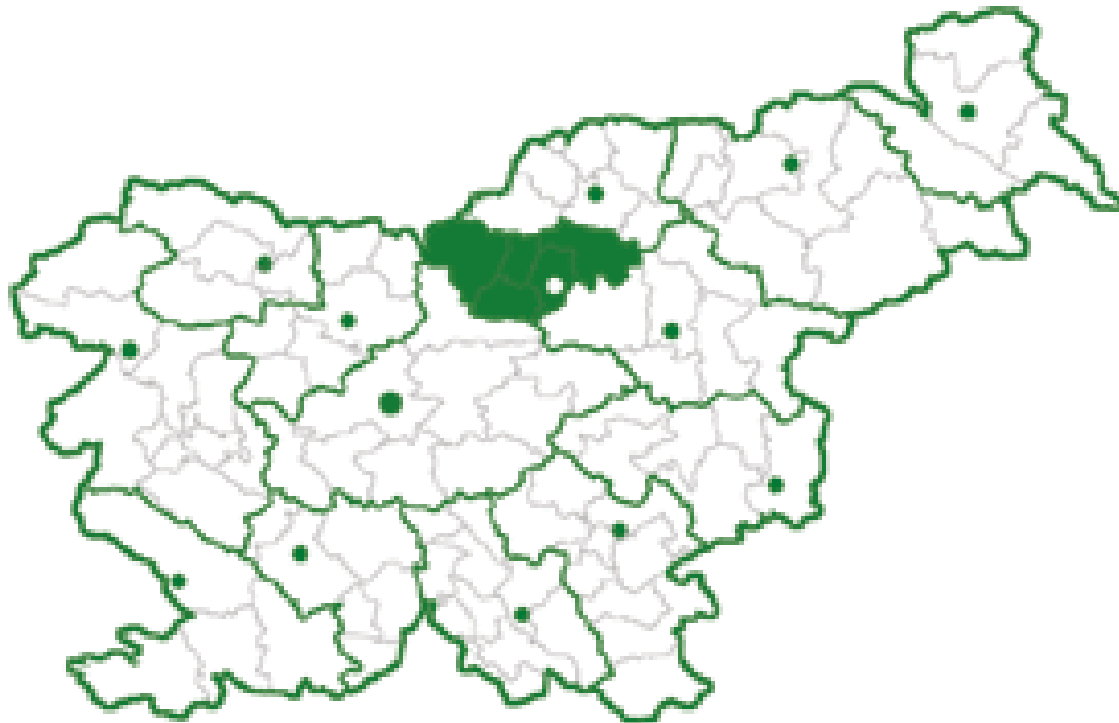


Working fields of KSSENA

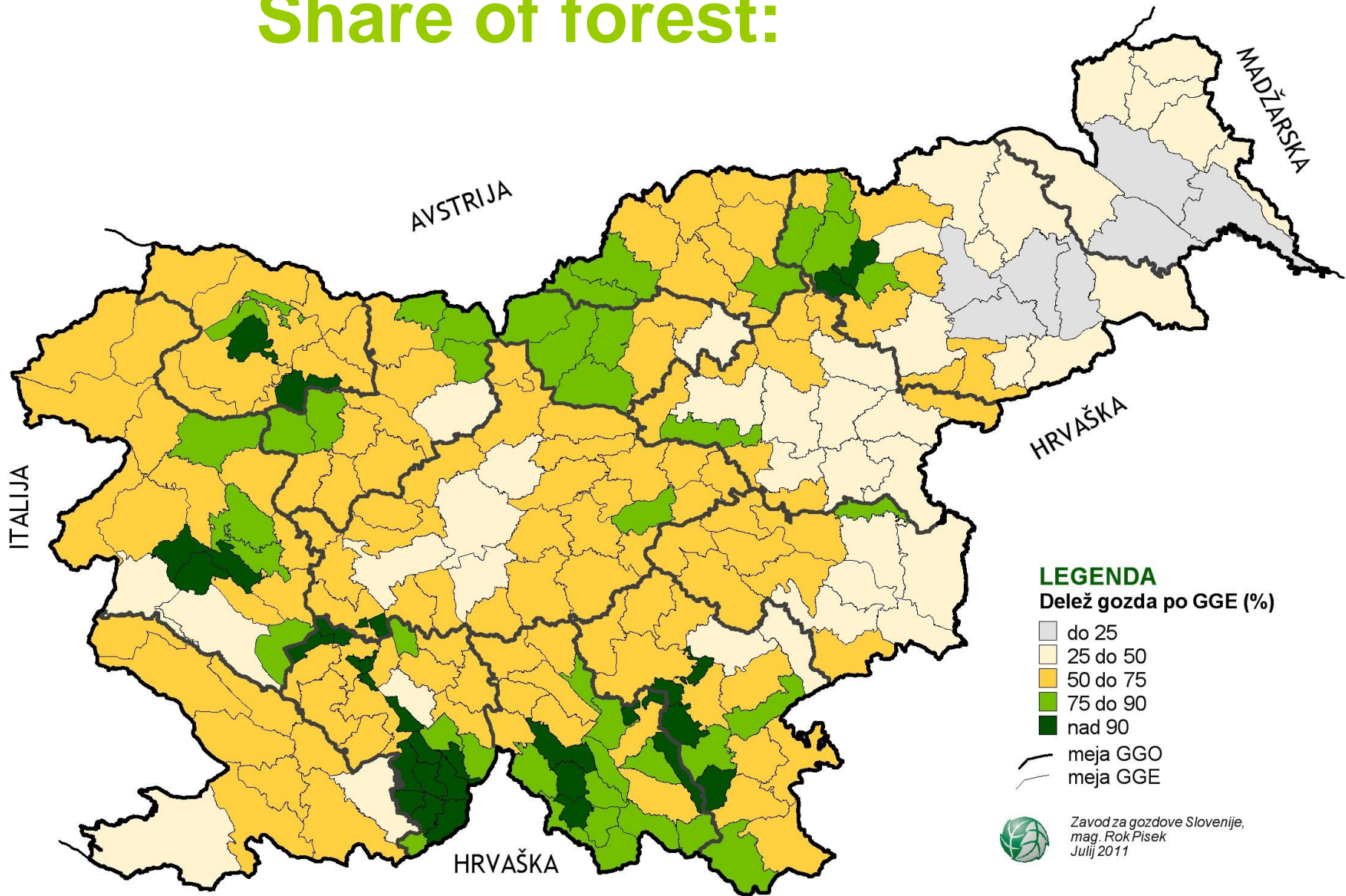


Location of BLTC:

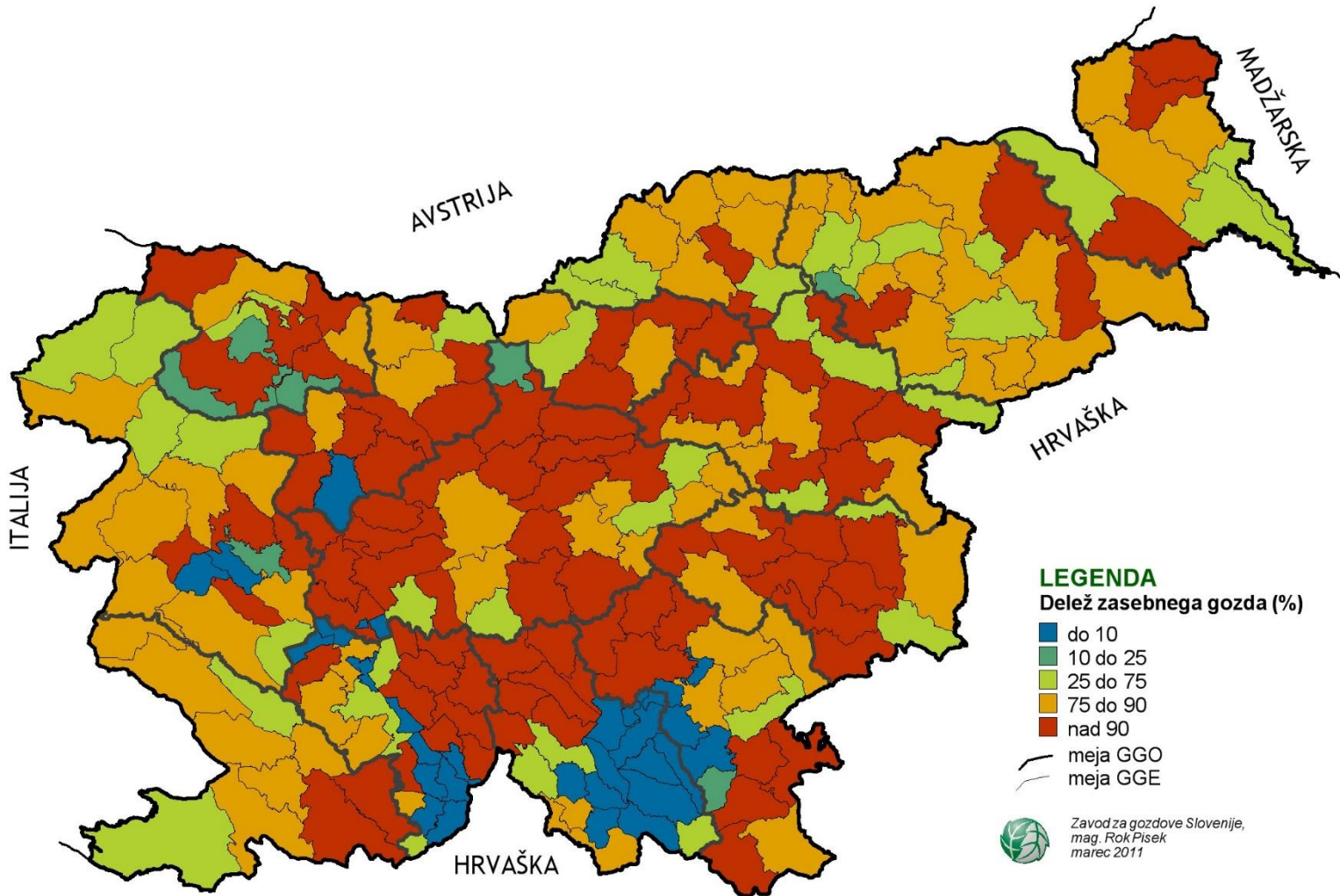
Area:	69.115,72	ha
Forest area:	49.358,23	ha
Forest cover:	71,41	%



Share of forest:



Ownership of the forests



Customer and Energy Market situation

Demands:

- More than 50% of Slovenia renewable energy resources present biomass
- Woody biomass is the most used energy source in the area (Upper Savinjska region)
- Heating oil and natural gas is mostly use in public buildings
- Households mainly use logwood
- Several district heating unit using biomass (woodchips) in the area
- Large scale costumers for biomass (Hotels, schools, chicken farms, spa resorts)

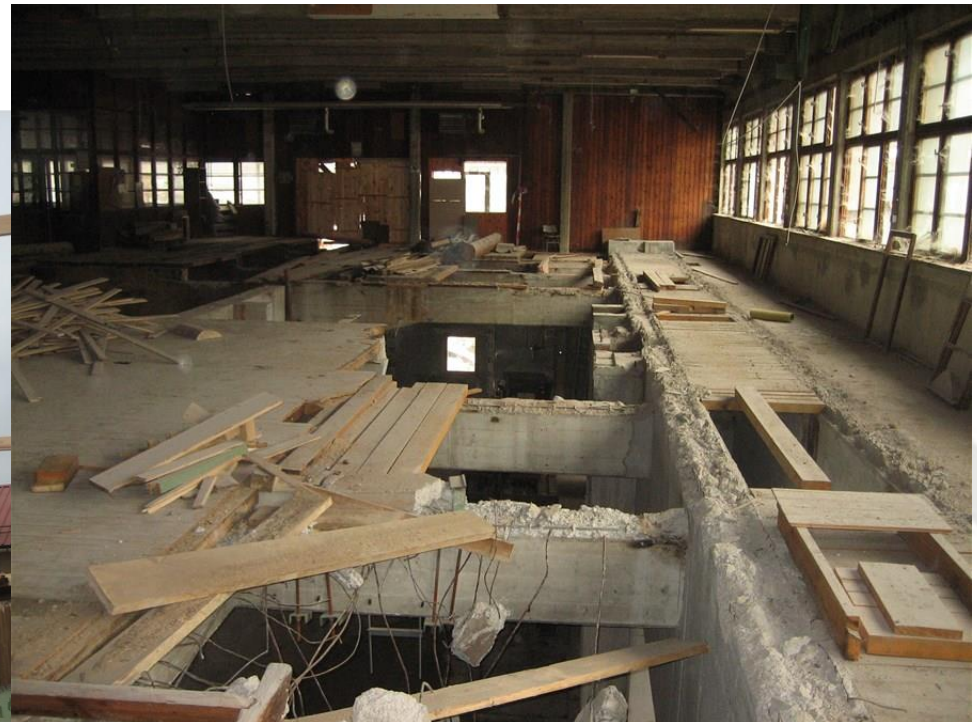


Supply side:

- Large number of forest owners
- Several wood process units
- Smaller sawmills

Investment

- Location in former wood-process industry buildings and areas
- Old buildings (no needs to invest in building new facilities, just miner reconstructions)
- Stepwise acquisition of land and buildings in the area of IZ Glin Nazarje



BLTC Biomasa Nazarje:

Facilities:

- 50.000 m² open areas for storage
- 7000 m² of covered areas for storage and production





BLTC Biomasa Nazarje:

Production:

- 170,000 m³ natural dried wood chips per year
- 80,000 m³ technically dried wood chips per year
- 10,000 tons of pellets per year



EQUIPMENT

Logistic:

- Transmission equipment for dosing and loading
- Equipment for supplying air
- Central control system – CNS – to monitoring biomass quality and quantity

Process:

- 2 flow drier for drying wood chips
- Flow facilities for the preparation of raw material for pellets
- Pellet mill, with a capacity of 1500 kg per hour
- Packaging device for packaging pellets into the bag
- Two wood chippers

Transportation:

- Front loader Volvo (volume 14 nm 3)
- Front loader ICB (volume 3 nm3)
- Trailer Fliegl, with the push wall
- Trailer Fliegl with blow fan



Co-Generation

- 10 cogeneration units of heat and electricity production, from wood gas
- 450 kW of electrical power
- 1000 kW thermal power
- 3,150 MWh of electricity per year
- Partial financed by Slovenian Eco Found



Nejc.jurko@kssena.velenje.eu

Tel.: +386 3 8961 520
Fax.: +386 3 8961522
info@kssena.velenje.eu
www.kssena.si



KSSENA

Zavod Energetska agencija za Savinjsko, Šaleško in Koroško
Energy Agency of Savinjska, Šaleška and Koroška Region
Koroška 37a / SI-3320 Velenje / Slovenija